



# RDAB10S-S

Damper actuator, 10 Nm

Damper actuator with spring return for control of dampers during power failures. With two auxiliary switches.

- Torque 10 Nm
- For dampers up to 2 m<sup>2</sup> in size
- 24...240 V AC / 24...125 V DC

- Two-position control (On/Off)
- Two built-in auxiliary switches

RDAB10S-S is a spring return actuator for operating air control dampers to an open or closed position during power failures.

## Operation

When the supply voltage is connected the actuator moves to its working position, while at the same time the spring return tenses. If the supply voltage is interrupted, the energy stored in the spring is released, returning the actuator to its safe position.

## Simple direct mounting

The actuator is easy to mount directly onto the damper spindle using a universal spindle clamp. The actuator comes supplied with a double anti-rotation strap to prevent it from rotating.

## Manual override

The damper can be adjusted manually and can be set to its desired position via the locking switch. The actuator can be made to resume normal operation either by resetting the locking switch or by reconnecting the supply voltage.

## Flexible signalling

RDAB10S-S has two built-in microswitches. One with a set breakpoint at 10% and one with an adjustable breakpoint between 10...90% of the turning area.

## Adjustable angle of rotation

The angle of rotation can be adjusted using mechanical end stops.

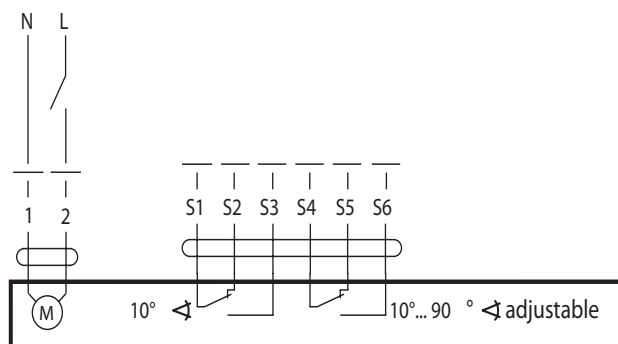
## High functional reliability

The actuator is overload-proof and does not require any limit switches. It will halt automatically when the end stop is reached.

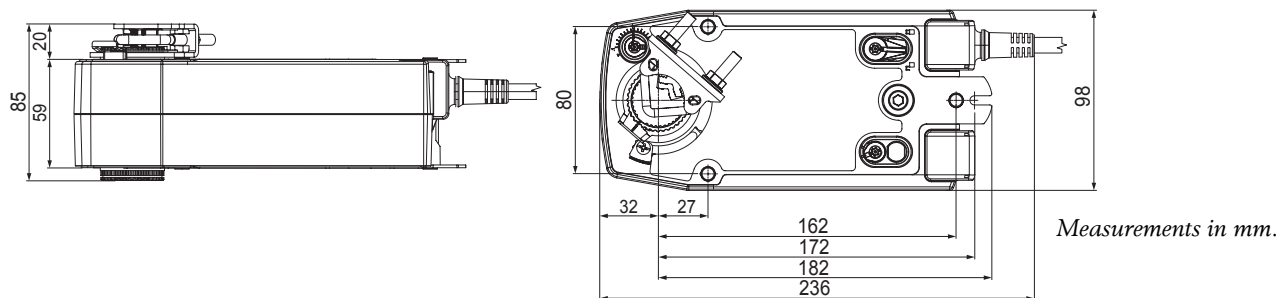
## Technical data

Supply voltage	24...240 V AC / 24...125 V DC, 50/60 Hz
Nominal voltage range	19.2 ... 264 V AC / 20.4 ... 126.5 V DC
Power consumption	
Running (at nominal torque)	6.0 W
Holding	2.5 W
For wire sizing	10 VA (24 V), 11 VA (240 V)
Sound power level	Max. 50 dB (A)
Direction of rotation (motor)	Reversible by switch right/left
Direction of rotation (spring return)	Selectable by mounting L/R
Torque	Min. 10 Nm at rated voltage
Auxilliary switches	2xSPDT, 1mA... 3(0.5)A, AC 250 V, one fixed at 10%, one adjustable 10...90%
Angle of rotation	Max. 95°, adjustable via locking switch
Running time (motor)	<75 s
Running time (spring return)	<20s
Position indication	Mechanical
Degree of protection	IP54
Ambient temperature	-30...+50°C
Storage temperature	-40...+80°C
Cable	1 m, 2 x 0.75 mm <sup>2</sup>
<b>CE</b>	This product conforms to the requirements of European EMC standards 2004/108/EC. It also conforms to the Low Voltage Directive (LVD) 2006/95 EC and carries the CE mark.

## Wiring



## Dimensions



### Head Office Sweden

Phone: +46 31 720 02 00  
 Web: [www.regin.se](http://www.regin.se)  
 Mail: [info@regin.se](mailto:info@regin.se)

### Sales Offices

France: +33 1 41 71 00 34  
 Germany: +49 30 77 99 40  
 Spain: +34 91 826 54 06  
 Hong Kong: +852 24 07 02 81  
 Singapore: +65 67 47 82 33

**REGIN**

THE CHALLENGER IN BUILDING AUTOMATION